

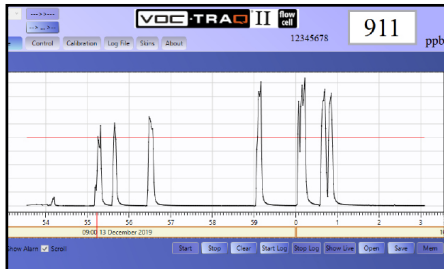


BASELINE[®] VOC-TRAQ[®] **TOTAL VOLATILE ORGANIC COMPOUND DETECTORS**

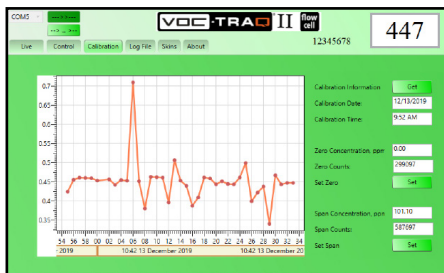


Toxic Gas Detection Using a Photoionization Detector

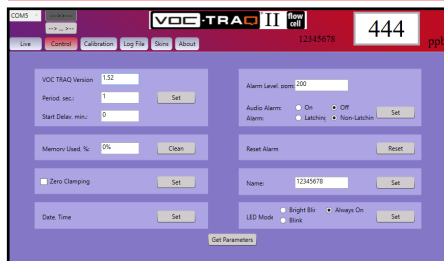
BASELINE® VOC-TRAQ® TOTAL VOLATILE ORGANIC COMPOUND DETECTORS



Concentration Screen



Calibration Screen



Control Screen

Designed for ease of use, whether you are an air quality consultant, safety engineer, maintenance manager, or just concerned about total volatile organic compound (TVOCs) in your environment, MOCON's Baseline® VOC-TRAQ® detectors are an excellent way to monitor and record PID detectable TVOCs.

Based on the latest Baseline® piD-TECH® eVx™ photoionization sensor, the VOC-TRAQ is both compact and economical. It has no moving parts and operates using the simplicity of diffusion, yet still offers a fast response time. Five (5) different detection levels between two lamp energies offer a broad range of detection capabilities.

The VOC-TRAQ consists of a cylindrical housing equipped with a mini-B USB port. The PID and associated electronic circuits are located inside the housing. Slotted openings in the cap serve as an entrance for target gases.

The VOC-TRAQ® Flow Cell incorporates the Baseline® VOC-TRAQ® II with a flow-through housing, enabling total volatile organic compound (TVOC) measurement with an inlet and outlet flow path for remote sample delivery. This unit allows for controlled sample delivery when used in conjunction with a pressurized source or pump.

The VOC-TRAQ software is compatible with Windows®-based PC's or in a stand-alone mode using an external USB power supply. Internal memory allows it to store up to 36,000 sample readings at user selectable time intervals. Includes programmable alarm levels with graduated audible signal that is proportional to the VOC concentration detected. A three-color LED displays concentration alarms.

Unlimited Applications

- Cleanrooms
- Work environments
- IAQ consultation
- Leak detection
- Educational facilities
- Research & development

Features & Benefits

- Easy to use
- Compact design
- Broad range of VOC detection capabilities
- Simple setup and calibration
- Programmable alarm levels with:
 - LED and audible alarm indication
- Stores up to 36,000 sample readings
- PC with Windows® OS compatible

Included Accessories

- USB cable, 2.0 to mini-B
- VOC-TRAQ® PC software

Optional Accessories

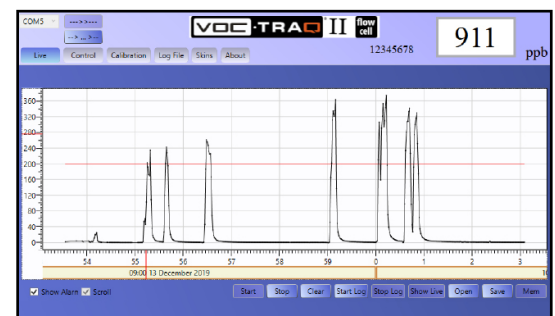
- P/N 043-126 - Device Stand (VOC-TRAQ II Only)
- P/N 043-136 - Calibration Cap w/ Tube (VOC-TRAQ II Only)
- P/N 043-189 - Carrying Case
- P/N 043-271 - piD-TECH eVx Maintenance Kit

BASELINE® VOC-TRAQ® II TOTAL VOLATILE ORGANIC COMPOUND DETECTOR

PRODUCT BROCHURE



The VOC-TRAQ II functions using a PC with a Windows® operating system or in a stand-alone mode using an external USB power supply. Internal memory allows it to store up to 36,000 sample readings at user selectable time intervals. Includes programmable alarm levels with graduated visual and audible signal that is proportional to the VOC concentration detected. A three-color LED displays concentration alarms.



Concentration Screen

Operating Specifications



Green
Part No: 043-734
Range: 10,000 ppm
MDQ: 500 ppb



Purple
Part No: 043-735
Range: 2,000 ppm
MDQ: 100 ppb



Red
Part No: 043-736
Range: 200 ppm
MDQ: 10 ppb



Yellow
Part No: 043-737
Range: 20 ppm
MDQ: 1.5 ppb



Blue
Part No: 043-738
Range: 2 ppm
MDQ: 0.5 ppb

Operating Specifications

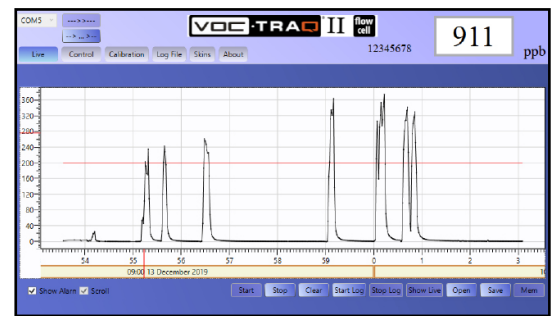
GASES MONITORED	Volatile Organic Compounds (VOC's) w/ ionization potentials (IP) of 10.6 eV Contact Mocon for complete ionization potential list
SENSOR	User replaceable, Baseline piD-TECH eVx shielded photoionization detector
LAMP ENERGY	10.6 eV
OPERATING TEMPERATURE	-20 C to 60 C (-4 F to 140 F)
OPERATING HUMIDITY RANGE	0 - 90 % relative humidity, non-condensing
HUMIDITY RESPONSE	< 1% @ 90% relative humidity
HUMIDITY QUENCHING EFFECT	< 15% @ 90% relative humidity
RESPONSE TIME	T 90: < 2 seconds (typical) green, purple, and red < 4 seconds (typical) yellow and blue
ACCURACY	+ 3% of reading, w/ constant temperature and pressure
INTERNAL MEMORY	2 Mb EEPROM memory stores up to 36,000 readings
SAMPLE FREQUENCY INTERVAL	Programmable, user selectable sample interval frequency from 0.1 sec
OUTPUT	USB
POWER	USB 5 VDC power for operation [PC, wall connected USB power supply (5.0 VDC, 40 mA), or optional battery pack]
CALIBRATION	Software controlled
COMPUTER REQUIREMENTS	Microsoft Windows 10 / 8 / 7 / Vista PC or equivalent via USB, 2.0 or greater
WEIGHT	1.9 oz (53.7 g)
DIMENSIONS	1" dia. x 3.6" L (2.5 cm dia. x 9.1 cm L)
WARRANTY PERIOD	18 months

BASELINE® VOC-TRAQ® II FLOW CELL TOTAL VOLATILE ORGANIC COMPOUND DETECTOR

PRODUCT BROCHURE



The VOC-TRAQ® Flow Cell incorporates the Baseline® VOC-TRAQ® II with a flow-through housing, enabling total volatile organic compound (TVOC) measurement with an inlet and outlet flow path for remote sample delivery. This unit allows for controlled sample delivery when used in conjunction with a pressurized source or pump.



Concentration Screen

Operating Specifications



Green
Part No: 043-743
Range: 10,000 ppm
MDQ: 500 ppb



Purple
Part No: 043-950
Range: 2,000 ppm
MDQ: 100 ppb



Red
Part No: 043-951
Range: 200 ppm
MDQ: 10 ppb



Yellow
Part No: 043-952
Range: 20 ppm
MDQ: 1.5 ppb



Blue
Part No: 043-953
Range: 2 ppm
MDQ: 0.5 ppb

Operating Specifications

GASES MONITORED	Volatile Organic Compounds (VOC's) w/ ionization potentials (IP) of 10.6 eV Contact Mocon for complete ionization potential list	
SENSOR	User replaceable, Baseline piD-TECH eVx shielded photoionization detector	
LAMP ENERGY	10.6 eV	
OPERATING TEMPERATURE	-4 C to 104 C (-20 F to 40 F)	
OPERATING HUMIDITY RANGE	0 - 90 % relative humidity, non-condensing	
HUMIDITY RESPONSE	< 1% @ 90% relative humidity	
HUMIDITY QUENCHING EFFECT	< 15% @ 90% relative humidity	
RESPONSE TIME	T 90: < 10 seconds (dry isobutylene response)	
ACCURACY	+ 3% of reading, w/ constant temperature and pressure	
INTERNAL MEMORY	2 Mb EEPROM memory stores up to 36,000 readings	
SAMPLE FREQUENCY INTERVAL	Programmable, user selectable sample interval frequency from 0.1 sec	
OUTPUT	USB	
POWER	USB 5 VDC power for operation [PC, wall connected USB power supply (5.0 VDC, 40 mA), or optional battery pack]	
CALIBRATION	Software controlled	
COMPUTER REQUIREMENTS	Microsoft Windows 10 / 8 / 7 / Vista PC or equivalent via USB, 2.0 or greater	
DIMENSIONS	1.4" diam. x 5.8" L (3.56 cm diam. x 14.73	INLET/OUTLET PORTS 1/4 - 28 UNF sample inlet/outlet ports. Supplied with Cheminert flanges nuts & collapsible ferrule
WEIGHT	5.0 oz (141.75 g)	INLET PRESSURE 0 to 60 psig
WARRANTY PERIOD	18 months	INLET FLOW 0 to 300 cc/min